

PONTIAC

The City of Pontiac completed construction of its first segment of the Clinton River Trail in 2004. This 1.5-mile stretch of abandoned rail corridor runs from Old Telegraph Road at the west end to its terminus at Bagley Street to the east. The trail is adjacent to Beaudette Park where parking, restroom, picnic, boating and fishing facilities are available. Traveling east from Beaudette Park, the trail runs along a portion of the Clinton River in a wooded setting before emerging into a primarily residential area. The next step of development for the Clinton River Trail in Pontiac is a 1.2 mile section from Bagley Street through and adjacent to Pontiac's historic downtown area. Pontiac has received a Michigan Department of Transportation grant for this work which is expected to be completed in 2008. Until the entire northern route can be



Riders gather at Beaudette Park



Historic Downtown Pontiac

completed, however, the temporary route from Bagley to Opdyke (see map) will remain the trail link to Auburn Hills on the east. Pontiac is also working with MDOT in planning a pedestrian bridge over Telegraph Road to link its westerly section of the trail with Sylvan Lake.



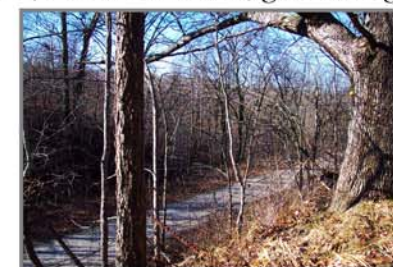
www.clintonrivertrail.org

ROCHESTER

As it rides the 1879 rail bed of the Michigan Airline Railroad, later to be acquired by the Grand Trunk Railroad, the Clinton River Trail enters Rochester following a much older route of transportation, the Clinton River. Surfaced with crushed limestone, Rochester's 2.5 mile portion of the Clinton River Trail runs parallel to the meandering river, crossing both Paint Creek and Stony Creek. In Rochester, Clinton River Trail users have access to the Paint Creek Trail via the Downtown Rochester River Walk, as well as the Macomb Orchard Trail to the east. Portions of the trail provide users with forest views, vistas of the Clinton River, and frequent wildlife sightings, including deer, red tailed hawks, groundhog, and fox.



View of the Stony Creek from the trail



Looking west at the newly surfaced trail



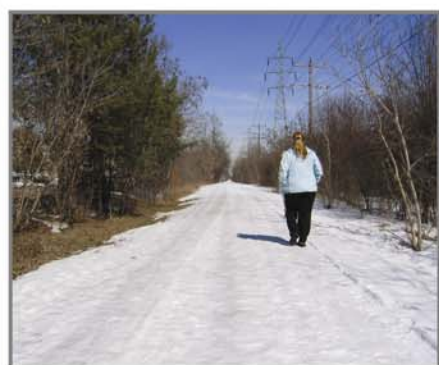
SYLVAN LAKE

Once a part of the first interurban railroad service in Oakland County, this portion of the Clinton River Trail now provides a non-motorized linkage from the West Bloomfield Trail to Pontiac. The trail begins at Sylvan Manor Park and cuts through the southern portion of Sylvan Lake in a southwest-northeast direction on its way to the City of Pontiac. As you travel along the trail through Sylvan Lake, you can explore the City's main commercial district along Orchard Lake Rd.



City Hall adjacent to the trail

This 1.25-mile section of trail connects neighborhoods with local businesses, City Hall, schools and recreational facilities.



Out for a walk on a brisk winter day



Clinton River Trail near City Hall

AUBURN HILLS

Opened in 2003, the Auburn Hills portion of the Clinton River Trail is 2.2 miles in length and runs east-west between Adams Rd. and Opdyke Rd. The 25-acre linear park is highlighted by a pedestrian bridge spanning I-75 that connects neighborhoods, schools and the Village Center Area in the city. The unique trail surface comprised of asphalt millings is ideal for biking, walking, jogging and cross-country skiing. Several off-street pathways link to the trail in various locations throughout the city. Parking is available at the trailhead located on the east side of Opdyke Rd., 1/2 mile north of South Blvd.



Pedestrian bridge spanning I-75



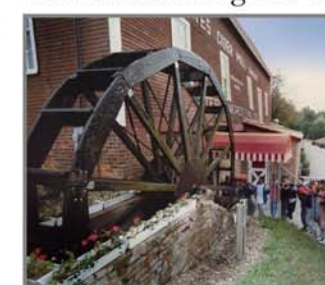
Trail enthusiasts out on a bright summer day



Just beyond the Village Center

ROCHESTER HILLS

The Clinton River Trail bisects the City of Rochester Hills. The habitat along this 4.5-mile portion of the trail is unique in its diversity and creates many opportunities to view and enjoy a host of wildlife species. Deer are common in the brush, muskrats and mink can be seen in the many wetlands, and the oak forests are home to numerous mammals and birds. This trail is an important wildlife corridor and connects the centrally located Avon Nature Study Area to Riverbend Park in the west and Bloomer Park in the east, all of which provide access to the Clinton River. Yates Cider Mill, Meadow Brook Hall at Oakland University, the Velodrome at Bloomer Park, and Rochester College are all places of interest to stop and visit along the way.



Yates Cider Mill near the trail



Velodrome at Bloomer Park



Clinton River Trail in the fall of 2004

About Friends of the Clinton River Trail

We are a group of residents committed to the vision of a trail that is a safe and enjoyable recreational feature for the communities through which it passes.

We intend to accomplish this by:

- Building community support and awareness for the trail
- Supporting local government efforts to develop, operate and maintain the trail
- Regular meetings to identify opportunities and develop action plans

For more information:

- Visit our website: www.clintonrivertrail.org
- Join Friends of the Clinton River Trail
- Call Dan Keifer at (248) 652-1434
- E-mail us at dckeifer@comcast.net
- Attend our meetings

SEE OTHER SIDE FOR MEMBERSHIP APPLICATION